



HEC
PARIS

HEC UK House – Brochure

43 Parker Street, London WC2B 5PS

AN IDEAL LOCATION IN THE HEART OF LONDON

between Covent Garden and Holborn



HEC UK HOUSE

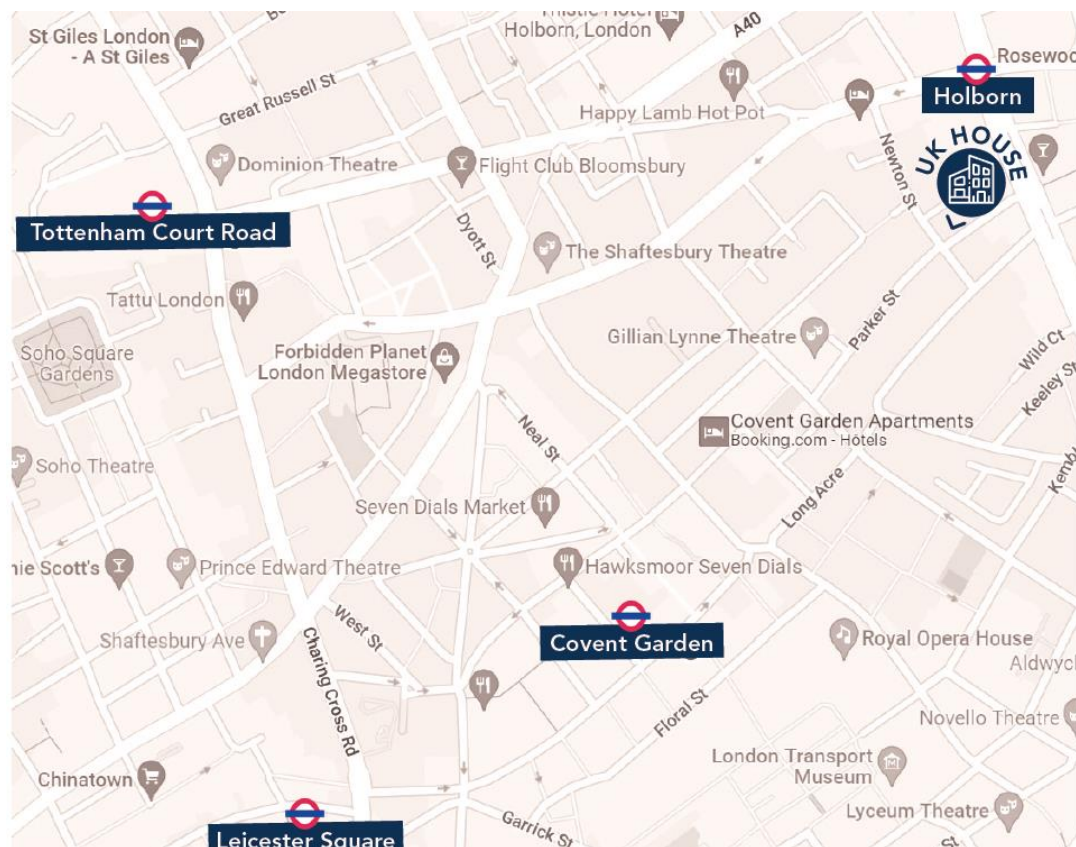
Hexagon

43 Parker Street

London WC2B 5PS



Covent Garden/Holborn



WHY THE HEC UK HOUSE

We Do Not Only Provide a Space, We Also Offer a Full Ecosystem

Our aim is to bring you more than a space, we offer you a full ecosystem

The mission of the HEC UK House is to provide an inspiring and creative atmosphere where people can work, meet, brainstorm, teach, learn, celebrate and much more.

By joining us, you will also have access to:

- ✓ **HEC alumni (4,000+ based in the UK), professors, entrepreneurs, investors and students**
- ✓ **Excellent location**, extremely central and well connected
- ✓ **Functionalities perfectly adapted** to any use case, versatile space over 2 vast floors (412 sqm total)
- ✓ **Attentive, warm and expert team** to host you in the best way possible
- ✓ **Amazing neighbourhood** and great deals with hotels and restaurants nearby

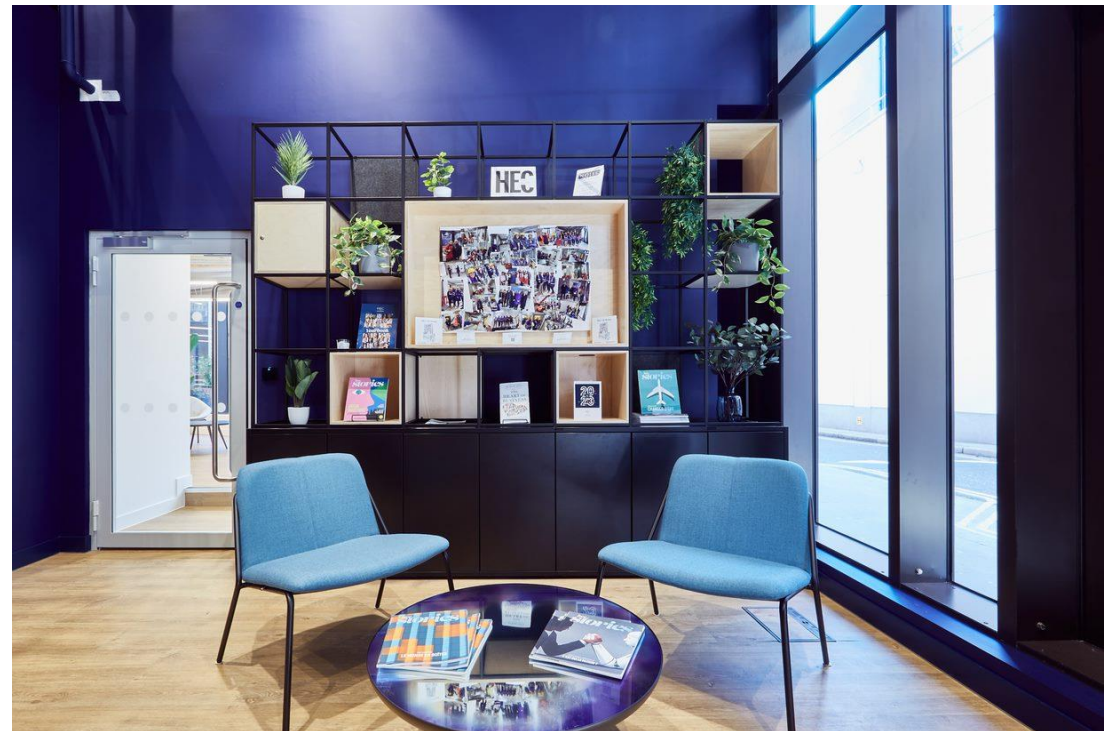


MEETINGS AND EVENTS AT THE HEC UK HOUSE

Variety of Spaces Available for Meetings and Events in the Heart of London

The HEC UK House offers five key spaces over two floors which can accommodate all your needs

- 1 Event Space – Ground Floor**
90 sqm, capacity of up to 115 people
- 2 Lounge – 1st Floor**
70 sqm, capacity of up to 60 people
- 3 Library – 1st Floor**
20 sqm, capacity of up to 9 people
- 4 Newton Room – 1st Floor**
18 sqm, capacity of up to 8 people
- 5 Creative Lab – 1st Floor**
35 sqm, capacity of up to 30 people

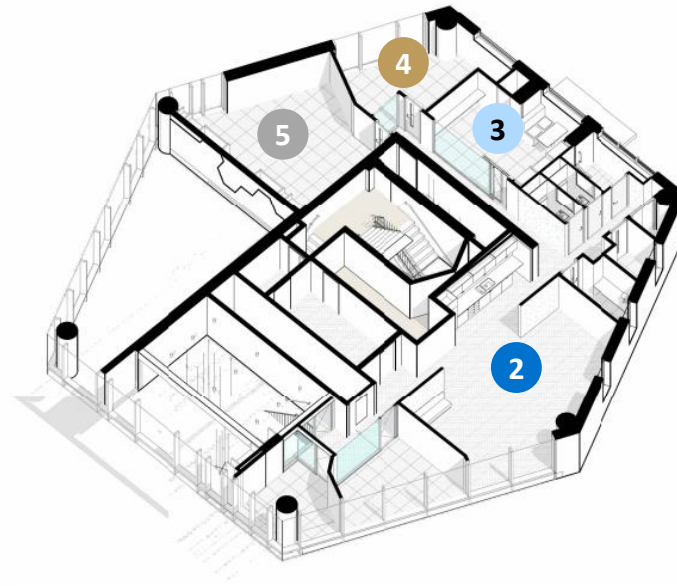


FLOOR PLANS

Versatile Spaces Available over Two Floors



Ground Floor



First Floor

- 1** Event Space
- 2** Lounge
- 3** Library
- 4** Newton Room
- 5** Creative Lab

FULLY EQUIPPED SPACES TO MEET ALL YOUR NEEDS



Meeting rooms which are versatile to allow teams to gather, meet virtually or in-person



On-site staff who can provide support wherever needed



Full room equipment with fibre-optic broadband, LCD screen, video conferencing, flipcharts



Printer available to use upon request



Common areas to share, network, meet and bolster creativity and productivity



Coffee throughout the day to keep the energy high!



Catering available on demand



Phone booths to make private phone calls or just to have some quiet time



Wheelchair accessibility throughout the building



Heating and air conditioning in each room



Shower for those who cycle/run to work, or come to the House between travel leg journeys

EVENT SPACE

Ground Floor

— Located on the ground floor of the House, the Event Space offers a modular and versatile space for both meetings and events

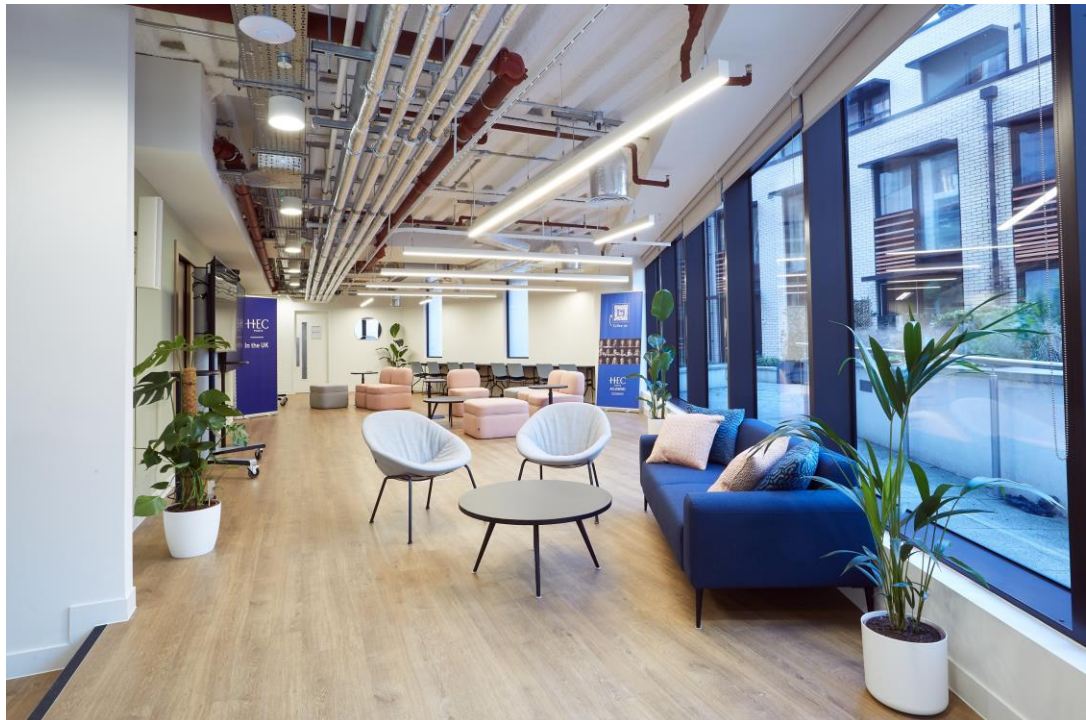
The space can be adapted to your specific needs: whether a masterclass, a brainstorming session, an offsite or a standing cocktail event, the Event Space offers you all the flexibility you need

— **Key Features:**

- ✓ 90 sqm
- ✓ Up to 115 people
- ✓ Access to reception and waiting area
- ✓ Full set of amenities
- ✓ Day light

— **Capacity/use**

- ✓ U Form: 15
- ✓ Classroom: 40
- ✓ Theatre: 80
- ✓ Mixed use: 20
- ✓ Coworking: 25
- ✓ Cocktail/Event:115



LOUNGE

First Floor

- Located on the first floor, the Lounge is a perfect space for co-working, networking events and receptions

This open space can accommodate up to 60 people and offers direct access to a tea point. Meeting rooms are located nearby and can be used if break out sessions required.



- **Key Features:**

- ✓ 70 sqm
- ✓ Up to 60 people
- ✓ Tea point
- ✓ Phone booths
- ✓ Full set of amenities
- ✓ Day light

- **Capacity/use:**

- ✓ Theatre: 50
- ✓ Mixed use: 14
- ✓ Coworking: 18
- ✓ Cocktail: 60



LIBRARY

First Floor

— The Library is perfect for group working sessions

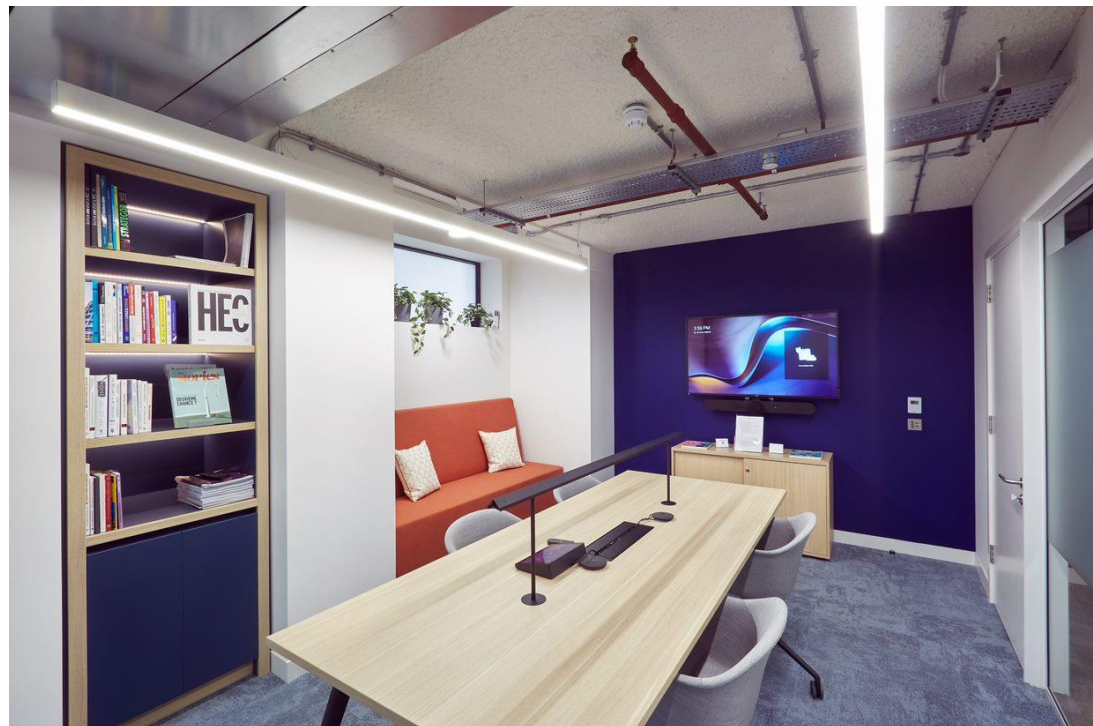
This Library is a cosy meeting room which can accommodate up to 9 people. In case you need a break, or make a private phone call, a teapoint and private phone booths are available on the same floor.

— Key Features:

- ✓ 20 sqm
- ✓ Up to 9 people
- ✓ Access to reception and waiting area
- ✓ Full set of amenities

— Capacity/use:

- ✓ Board: 6
- ✓ Mixed use: 9



NEWTON ROOM

First Floor

— **The Newton Room is an ideal space for meetings with your team or clients.**

The Newton Room also benefits from being tucked away in a private corner, making it ideal if you need to be discreet and at the same time flooded with natural day light. .

— **Key Features:**

- ✓ 18 sqm
- ✓ Up to 8 people
- ✓ Access to reception and waiting area
- ✓ Full set of amenities
- ✓ Day light

— **Capacity:**

- ✓ Board: 8



CREATIVE LAB

First Floor

- **The Creative Lab is a perfect setting for team away days and brainstorming sessions, think big and have fun.**

The Creative Lab is a flexible space to create and innovate. It is a versatile space that is ideal for team gatherings.

- **Key Features:**

- ✓ 35 sqm
- ✓ Up to 20 people
- ✓ Access to reception and waiting area
- ✓ Full set of amenities
- ✓ Day light

- **Capacity:**

- ✓ Theatre: 20
- ✓ Mixed use: 12
- ✓ Coworking: 12
- ✓ Cocktail: 30



ROOM CAPACITY OVERVIEW

	Board	U Form	Classroom	Theater	Mixed use	Coworking	Cocktail
1 Event Space		15	40	80	20	25	115
2 Lounge				50	14	18	60
3 Library	6				9		
4 Newton Room	8						
5 Creative Lab				20	12	12	30



In the UK

Key contacts:

Delphine Mourot

mourot@hec.fr - 07555 005956

Laura Saint-Lo

saint-lo@hec.fr - 07442 904492

Marie Normant

marie.normant@hecalumni.fr - 07379 317534

Johanna Guillen

johanna.guillen@hecalumni.fr – 07541 301061

